



Felrap World, Inc

The fastest, most economical way to wrap!

Presents

The Felrapper® Console F240

Holds 2 rolls of wrap up to 40" wide - each width instantly available!



Completely Supported Sliding Sealing Drawer

**Can support over 100 pounds!
Stainless Steel Construction**

Ideal for Shippers, Freight Forwarders,
Hospitals, Hotels, Laundries, and Printers.

Can replace paper, tapes and bags for
industrial wrapping applications.

Material is Clear, Low Cost, Non-Skid,
Tough, and Reusable!

**For more information, contact:
FELRAP WORLD, INC
3 Matthew Drive, Warren, RI 02885
TEL (401) 245-4796 • FAX (401) 245-4448
TOLL FREE 1-800-969-4940**

Felrapper Features:

Fumeless cutoff
Rugged sliding sealing drawer
Easy to load rolls - no shafts

Specifications for Felrapper F240:

Voltage: 110-120 V
Hotplate Temp: 1200 W
42" wide, 35" deep, 34" high
Shipping Weight: 150 lbs.

**WE STOCK SPARE PARTS
FOR ALL BRANDS OF WRAPPERS**

**WE SHIP LAUNDRY WRAP AND OTHER HEAT
SEALING SUPPLIES SAME DAY FROM OUR
WAREHOUSE!**

Using your Felwrapper® is as easy as 1-2-3!

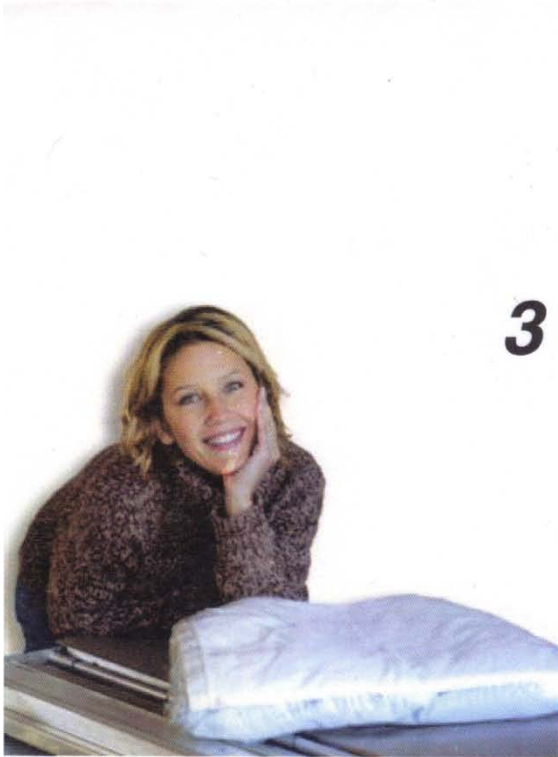


- 1** Place package on bridge and walk into sealing drawer (it will move back easily under the machine). Pull film up and over bundle; use enough film so that excess can be wiped underneath rear of bundle.

Wipe film from center of bundle out so hands are on rear outer edge of the bundle; hold onto film and lift package.



2



- 3** Step back with bundle, lifting up and past cutoff wire area. Sealing plate will come out automatically; film will cut off when bundle is placed down on the sealing plate. Stretch and seal one end of film (do not crumple). Lift other end of package, wipe flat and seal. The entire procedure takes only seconds!

FELRAP WORLD, INC.

The fastest, most economical way to wrap!

P.O. Box 297
Warren, RI 02885

Telephone (800) 969-4940
FAX (401) 245-4448

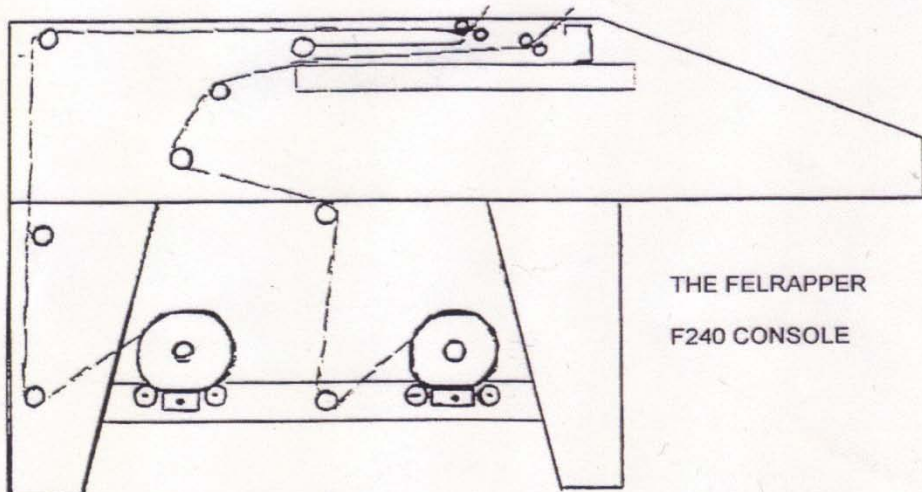
FELRAP F240 CONSOLE – OPERATING PROCEDURE

The film is threaded from the bottom of the machine. Tension of film is controlled by the wing nuts at the end of the rollers that support the roll of film. If the tension is too tight the film will tend to pull back from the top opening after being cut. When about half way thru a roll, you may want to check the tension as the roll has changed in weight.

The thermostat controls the temperature of the hot plate which should be at a starting temperature of 225 degrees and gradually turned up to a suitable temperature for your particular film to get a good seal. **Note**, if you do not intend to use the machine, but want to leave it on, reduce the hot plate temperature by turning the control knob to minimum. This reduces heat build-up in the machine and reduces energy consumption.

To wrap your bundles, you will place them on top of the stainless steel tray. Pull the film up and over, around and under your bundle. Pick up bundle and place it on the hot plate. When film touches the hot rod it will separate from the roll. Once package is on hot plate, tuck the ends underneath the bundle to seal. Lifting one end of bundle at a time, **be careful not to touch your hands on the hot plate**, refer to "Methods of Wrapping" photos on our brochure. This method of is only a suggestion. All wrappers develop their own style and technique.

If you have any problems or questions, please call your distributor or FELRAP WORLD, Inc., Warren, RI (800) 969-4940.



FELRAP WORLD, INC.

The fastest, most economical way to wrap!

P.O. Box 297
Warren, RI 02885

Telephone (800) 969-4940
FAX (401) 245-4448

TECHNICAL BULLETIN -A FELRAPPER WRAPPING MACHINES

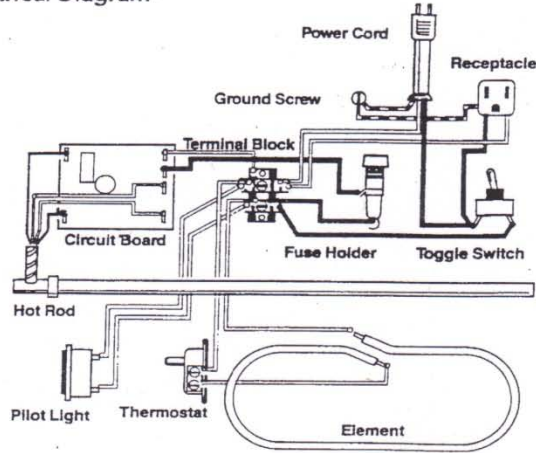
HOT ROD & CIRCUIT CONTROL BOARD TROUBLE CHECKS

1. IF HOT ROD IS HOT AND FILM IS NOT CUTTING:
 - (a) Check film tension.
 - (b) The PC Board Controller is factory preset at 275 deg.
This is more than adequate for PVC Laundry Wrap [50 to 100 gauge].
The PC Board "Trim Pot" can be adjusted to decrease the temperature of the Hot Rod, refer to figure (1).

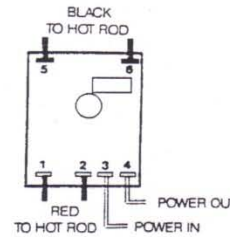
Warning: *The unit should not be operated if the rod temperature exceeds 275 deg. If smoke or fumes are detected, discontinue use of unit.*

2. IF ROD IS COLD:
 - (a) Check fuse.
 3. IF FUSE IS "OK"
 - (a) Check all wires (visually) to be sure none are disconnected.
 4. IF WIRES AND FUSE ARE "OK" (check rod with Ohmmeter):
 - (a) Disconnect "red" heater wires.
 - (b) Using Ohmmeter, measure resistance across "red" leads. Should read 130 OHMS. If no reading or high reading REPLACE ROD.
 - (c) Disconnect "black" thermister wires, with cold rod, and if reading is over 300,000 OHMS (300K) or no reading REPLACE ROD, (thermister is bad).
 5. IF ROD IS "OK" (check circuit board with D.C. Voltmeter):
 - (a) Disconnect rod wire from PC Board.
 - (b) Switch SW1 to on, using D.C. Voltmeter.
 - (c) Read across (black) terminals should be 6.5 VDC. If less than 6.5 VDC REPLACE BOARD.
 - (d) Connect (black) wires to board. Reading should be 3VDC. If less than 3 VDC, REPLACE BOARD.
-

Electrical Diagram



Circuit Board



ELECTRICAL TESTS

A standard 110V Neon Circuit Tester can be used for this procedure.

CHECKING THE FUSE

With power OFF disconnect red wire from terminal 1 and secure it out of the way without it touching any metal parts.

With power ON test across terminals 3 & 4. If tester does not light, replace fuse.

CHECKING THE HOT ROD

With power OFF disconnect red wire from terminal 1 and secure it out of the way without it touching any metal parts.

With power ON test between terminal 1 and end of wire disconnected from same terminal. If tester does not light, replace hot rod.

CHECKING THE CIRCUIT BOARD

With power OFF disconnect red wire from terminal 1 and secure it out of the way without it touching any metal parts.

With power ON test across terminals 1 & 2. If tester does not light, replace circuit board.

WARNING : This unit should not be operated if rod temperature exceeds 275 F. If smoke or fumes are detected, discontinue use of unit. For service assistance, call your distributor or FELRAP World Inc @ 800-969-4940.

FELRAP WORLD, INC.

The fastest, most economical way to wrap!

Telephone (800) 969-4940

FAX (401) 245-4448

FELRAP WORLD, INC.

The fastest, most economical way to wrap!

P.O. Box 297
Warren, RI 02885

Phone (401) 245-4796

Fax (401) 245-4448

Toll Free 1-800-969-4940

www.felrap.com

THE FELRAPPER F240 SPARE PARTS LIST

<u>PART NO.</u>	<u>DESCRIPTION</u>
1818001	CIRCUIT BOARD
1821013	FUSEHOLDER
1824014	HOT ROD 43 1/4" LONG
1836004	PILOT LIGHT ASST
1851005	POWER CORD 7' W/CAP
1872008	TOGGLE SWITCH 15 AMP
1875002	TERMINAL BLOCK HIGH TEMP
1881003	THERMOSTAT
1958003	RETAINER, SHAFT PLASTIC
2105014	ROLLER BEARING
2145004	KNOB, THERMOSTAT
3010016	FILM GUIDE
5901006	TEFLON COVER 13" X 26"
6202012	HOT PLATE CASTING
6202013	HOT PLATE ASSY KIT, W/PLATE, ELEMENTS, RETAINERS, WIRES, COVER, AND MTG SCREWS.
6204026	FILM SUPPORT ROLLER, 1 1/4" X 40 3/4"
6202020	HOT PLATE RETAINER
6202021	HOT PLATE ELEMENT
6202023	WIRE HARNESS, HIGH TEMP
6205015	FILM ROLLER GUIDE, 1" X 40 3/4" LONG
6301020	TENSION BRAKE
6301027	SPADE TERMINALS, HIGH TEMP KIT
6834042	WHEELS, 5" CASTER, SET OF 4

NOTE: **ORDERS SHIPPED SAME DAY UPS.**